

21PW - 21A-PW SERIES

General Purpose, 2-way, Indirect Acting

21PW - 21A-PW are indirect acting, piston solenoid valves. These valves require a minimum operating pressure of 0,3 bar. They are suitable for compressors. These solenoid valves are not suitable for stagnating fluids, or for fluids that being subject to evaporation may deposit solid, calcareous or similar residues. 2/2 NO valves are available also with 22 mm coils.



TECHNICAL DATA

PORT CONNECTION	G 1/4		G 3/8 to G 1/2
SEALING MATERIALS	soft		hard
	FKM	hnbr	PTFE
FLUID TEMPERATURE	-10°C +140°C		
FLUIDS	Air, inert gas, water		
VISCOSITY	max. 12 cSt		
TUBE Ø - COIL WIDTH - SERIES	ø 10 mm - 22 mm		LBA05, LTA05 (class F), LBV05 (class H)
	ø 13 mm - 30 mm		BDA08, BVA08 (class F), BDV08 (class H)
	ø 13 mm - 30 mm		UDV16 (CLASS H)
	ø 13 mm - 30 mm		GDV14 (CLASS H)
INSTALLATION	as required, preferably with actuator upright		
PROTECTION DEGREE	IP65 EN 60529 (DIN 40050) with plug connector		

■ MOPD values are referred to "standard power" coil range. Please refer to coil chapter.

MATERIALS

BODY, ORIFICE	Brass UNI EN 12165 CW617N
ARMATURE TUBE	Stainless steel AISI Series 300
FIXED CORE	Stainless steel AISI Series 400
PLUNGER	Stainless steel AISI Series 400
PHASE DISPLACEMENT RING	Copper (Cu 99,9%) or gold plated copper
SPRING	Stainless steel AISI Series 300
PISTON	Stainless steel AISI Series 300 + PPS (for G3/8 to G1/2)
PISTON SEAL	FKM (for G3/8 to G1/2)
SEALING	V=FKM, T=PTFE

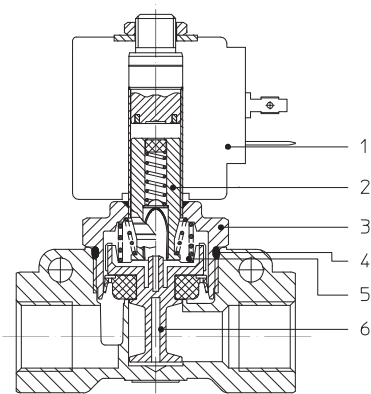
■ **CE**
- 2014/35/EU (LVD)
- 2014/30/EU (EMC)
- 2014/68/EU (PED),
art. 4.3 up to 1"

■ **UL** recognized and **VDE**
approved coils are available
for this series, please refer
to coil section.

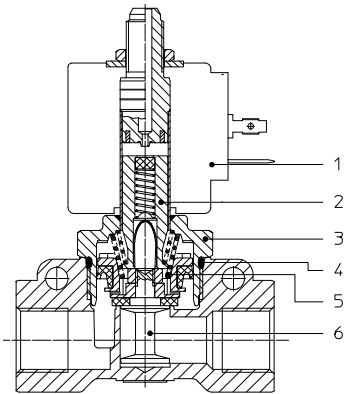
■ **EXPLOSION PROOF COILS**
suitable for zone 2-22 are available
for this series. Please refer to ATEX
coil section for further details.

■ The fluids listed in the "technical data" tables should be considered as a recommendation.
Please check the chemical compatibility of the fluids with the materials of the valve at RFQ stage.
■ For spare parts list please refer to the dedicated chapter.

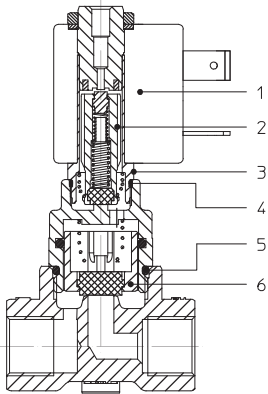
NC, FKM, G3/8 AND G1/2



NO, PTFE, G3/8 AND G1/2 (SEZIONE PER 21PW SERIES)

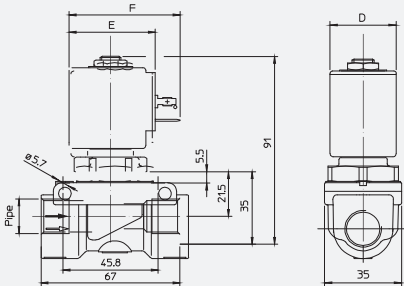


NO, G1/4

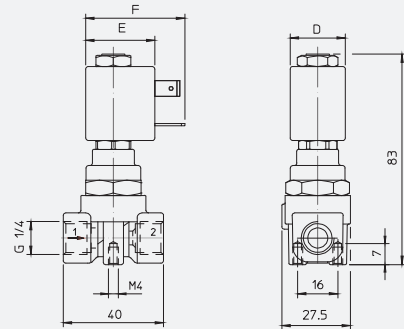


Solenoid Valves ■ General purpose ■ 2-way ■ Indirect Acting ■ 21PW - 21A-PW SERIES

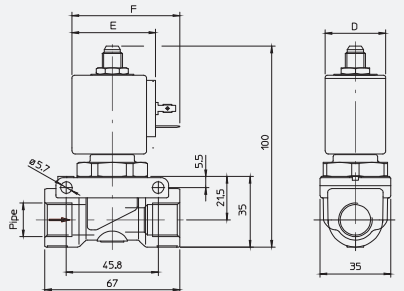
DRAWING 1



DRAWING 2



DRAWING 3



COIL SERIES	DIMENSIONS [mm]		
	D	E	F
L**05	22	28±1	39,5
B**08	30	42	54
UDV16	36	48	60
GDV14	52	55	67

2/2 NC WITH
FKM SEALING

PIPE	ORIFICE SIZE	Kv	COIL SERIES	PRESSURE [bar]				CODE		DRAWING REFERENCE
ISO 228/1	Ø [mm]	[l/min]		MIN	MOPD		PS	BRASS	STAINLESS STEEL	
					AC	DC				
G3/8	12	32	B**08	0,3	15	-	25	21PW3K0V120	-	1
			UDV16	0,3	15	-	25	21PW3K0V120	-	1
			GDV14	0,3	15	10	25	21PW3K0V120	-	1
G1/2	12	38	B**08	0,3	15	-	25	21PW4K0V120	-	1
			UDV16	0,3	15	-	25	21PW4K0V120	-	1
			GDV14	0,3	15	10	25	21PW4K0V120	-	1

2/2 NC WITH
PTFE SEALING

PIPE	ORIFICE SIZE	Kv	COIL SERIES	PRESSURE [bar]				CODE		DRAWING REFERENCE
ISO 228/1	Ø [mm]	[l/min]		MIN	MOPD		PS	BRASS	STAINLESS STEEL	
					AC	DC				
G3/8	12	32	B**08	0,5	18	-	25	21PW3K0T120	-	1
			UDV16	0,5	20	-	25	21PW3K0T120	-	1
			GDV14	0,5	20	15	25	21PW3K0T120	-	1
G1/2	12	38	B**08	0,5	18	-	25	21PW4K0T120	-	1
			UDV16	0,5	20	-	25	21PW4K0T120	-	1
			GDV14	0,5	20	15	25	21PW4K0T120	-	1

2/2 NO WITH
SOFT SEALING

PIPE	ORIFICE SIZE	Kv	POWER RANGE	PRESSURE [bar]				CODE		DRAWING REFERENCE
ISO 228/1	Ø [mm]	[l/min]		MIN	MOPD		PS	BRASS	STAINLESS STEEL	
					AC	DC				
G1/4	5,5	9	L**05	0,5	12	-	25	21A2W0F55-PW	-	2
					15	-	25	21A2Y0F55-PW	-	2
G 3/8	12	32	B**08	0,3	15	15	25	21PW3FOV120	-	3
G 1/4	12	38	B**08	0,3	15	15	25	21PW4FOV120	-	3

2/2 NO WITH
PTFE SEALING

PIPE	ORIFICE SIZE	Kv	POWER RANGE	PRESSURE [bar]				CODE		DRAWING REFERENCE
ISO 228/1	Ø [mm]	[l/min]		MIN	MOPD		PS	BRASS	STAINLESS STEEL	
					AC	DC				
G 3/8	12	32	B**08	0,5	18	18	25	21PW3F0T120	-	3
G 1/4	12	38	B**08	0,5	18	18	25	21PW3F0T120	-	3

I	II	III	IV	V	VI	VII	VIII	CODIFICATION 21 PW
2	1	PW	3	K	0	V	120	
I. NUMBER OF WAYS 2 - 2 - way		IV. CONNECTIONS 3 - G3/8 4 - G1/2		VI. SHADING COIL OPTIONS 0 - copper		VII. SEALING MATERIAL V - FKM T - PTFE		
II. NUMBER OF ELEMENTS 1 - 1 element		V. CORE TUBE TYPE K - for 2/2 NC valves F - for 2/2 NO valves		VIII. ORIFICE Ø [mm] MULTIPLIED BY 10				
III. SERIES PW - piston valve, up to G1/2								

I	II	III	IV	V	VI	VII	VIII		IX	CODIFICATION 21A- PW
2	1	A	2	Y	O	V	120	-	PW	
I. NUMBER OF WAYS 2 - 2 - way			V. CORE TUBE TYPE Y - for 2/2 NO 3rd way exhaust Ø 1.2 mm W - for 2/2 NO 3rd way exhaust Ø 1.5 mm			VIII. ORIFICE Ø [mm] MULTIPLIED BY 10				
II. NUMBER OF ELEMENTS 1 - 1 element			VI. PHASE DISP. RING MATERIAL O - copper			IX. VERSIONS PW - piston type				
III. SERIES A - piston valve, up to G1/4			VII. SEALING MATERIAL F - HNBR							
IV. CONNECTIONS 2 - G1/4										